



HUNTERS[®]
HERE TO GET *you* THERE

3   |  |  D

Brampton Road, London

Asking Price £550,000



Nestled in the desirable Central Park Estate, this splendid mid-terrace Victorian house on Brampton Road offers a perfect blend of classic charm and modern living. Built in 1900, the property boasts attractive living space, making it an ideal family home.

Upon entering, you are greeted by a spacious through lounge, characterised by its high ceilings that create an airy and inviting atmosphere. This versatile space is perfect for both relaxation and entertaining, allowing for a seamless flow throughout the ground floor. The property features three well-proportioned double bedrooms, ensuring ample room for family or guests. The first-floor bathroom is conveniently located, catering to the needs of a busy household. The property boasts a sunny west facing garden, mainly laid to lawn.

One of the standout features of this property is that it comes with no onward chain, allowing for a smooth and efficient purchase process. This is particularly appealing for those looking to move in without delay.

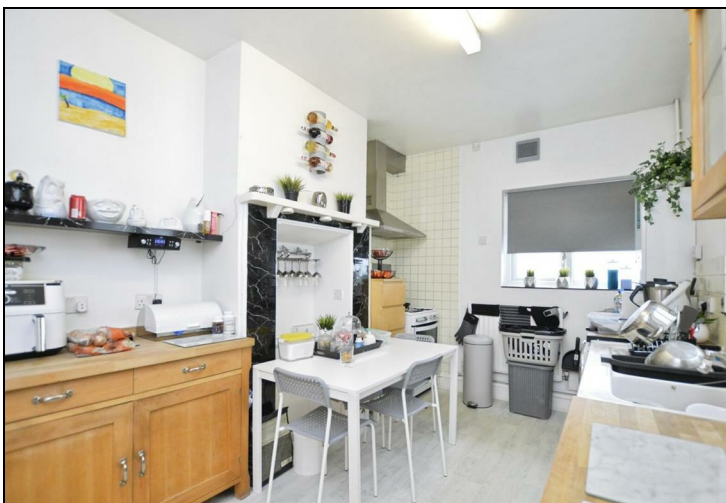
Families will appreciate the proximity to Brampton Manor Academy, an esteemed institution recognised as "Outstanding" by Ofsted in 2012, 2018, and 2024. The school is renowned for its exceptional GCSE and A-Level results, often leading students to prestigious universities such as Oxford and Cambridge.

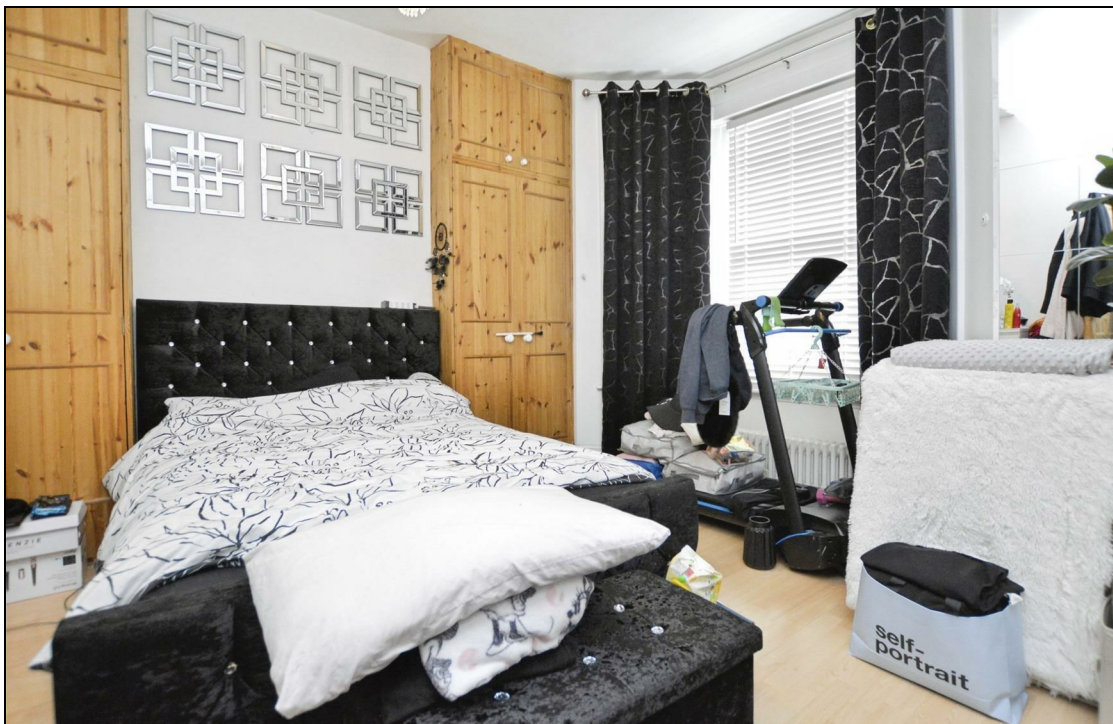
In summary, this remarkable three-bedroom Victorian home on Brampton Road presents an excellent opportunity for those seeking a spacious and well-located property in London. With its charming features, generous living space, and access to top educational facilities, it is a must-see for prospective buyers.



KEY FEATURES

- ATTRACTIVE VICTORIAN TERRACED PROPERTY
- THREE LARGE BEDROOMS
- SPACIOUS DOUBLE RECEPTION
- FIRST FLOOR BATHROOM
- GARDEN
- WELL PRESENTED THROUGHOUT
- IMPRESSIVE HIGH CEILINGS
- CENTRAL PARK ESTATE
- CATCHMENT FOR BRAMPTON MANOR ACADEMY

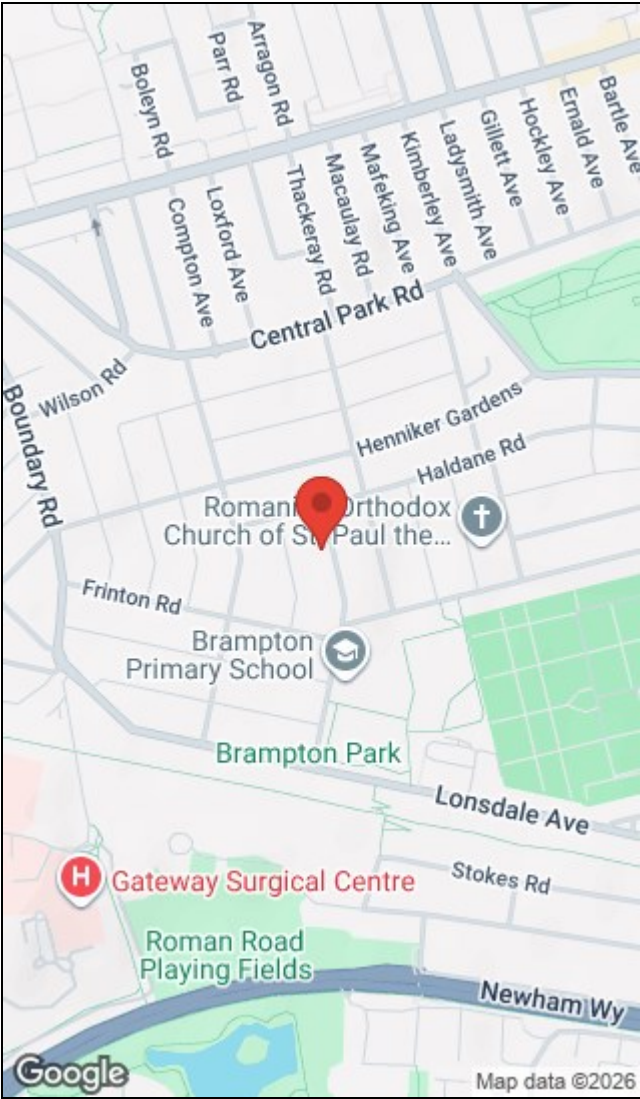









Whilst every attempt has been made to ensure the accuracy of the floorplan contained herein, measurements of doors, windows, rooms and any other details are approximate and no responsibility is taken for any error, omission or misstatement. This plan is for illustrative purposes only and should be used as such by any prospective purchaser. The services, systems and appliances shown have not been tested and no guarantee as to their operability or efficiency can be given.
Made with Measure 2020



Energy Efficiency Rating		
	Current	Potential
Very energy efficient - lower running costs		
(92 plus) A		86
(81-91) B		
(69-80) C		
(55-68) D	68	
(39-54) E		
(21-38) F		
(1-20) G		
Not energy efficient - higher running costs		
England & Wales		EU Directive 2002/91/EC 

Environmental Impact (CO ₂) Rating		
	Current	Potential
Very environmentally friendly - lower CO ₂ emissions		
(92 plus) A		
(81-91) B		
(69-80) C		
(55-68) D		
(39-54) E		
(21-38) F		
(1-20) G		
Not environmentally friendly - higher CO ₂ emissions		
EU Directive 2002/91/EC		
England & Wales		

272 Barking Road, Plaistow, London, E13 8HR | 0207 474 2345
plaistow@hunters.com | www.hunters.com



This Hunters business is independently owned and operated by Hunters Property Newham Ltd | Registered Address: 272 Barking Road, London E13 8HR | Registered Number: 8785454 England and Wales | VAT No: 180 3776 96 with the written consent of Hunters Franchising Limited.

